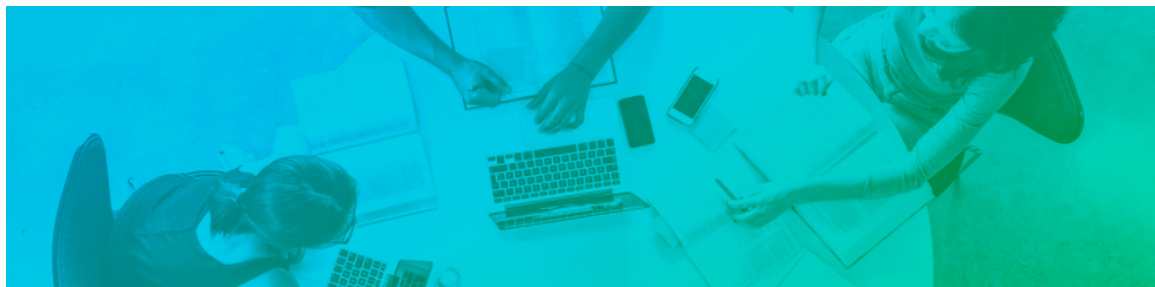


Impact of the month

April - 2022



In order to strengthen the insight for our students in Consensus influence, Impact of the Month is sent out, a newsletter focusing on our latest work with university, municipal and national related questions.

Do you have something that you would like us to work on more or an issue that you think Consensus should pursue? Get in touch, you will find our contact information on the right!

The Campus bus

There have been a substantial number of students that have noted that the Campus bus is not fitted for MedFak-students. It is difficult to get in time for rounds in the morning, it takes unnecessary time to always pass through campus Valla, it is hard to get to exams that start at 08:00 and the bus does not have any departures at weekends when there are exams. An extended time schedule for the Campus bus would also lead to increased possibilities for students at their respective campuses to engage more in each other's student life and organizations. We have therefore asked for new negotiations regarding the Campus bus to create better and more equal terms for our students.



*Impact of the month is Consensus new way to give you students more transparency to the work and advocacy towards the university. You will also find the **Impact of the month** here: <https://www.consensus.liu.se/aktuellt/manadens-paverkan>*

Don't forget to get member in Consensus here: [medlem.consensus.liu.se](https://www.consensus.liu.se/medlem)

Contact us:

PRESIDENT OF THE BOARD

Linus Ohlsson

ko@consensus.liu.se

070-710 07 62

VICE PRESIDENT OF THE BOARD

Jannice Bygdén

vko@consensus.liu.se

070-944 57 78

HEAD OF EDUCATIONAL AFFAIRS

Tilda Jalakas

uu@consensus.liu.se

073-940 55 20

After a relatively weak audience, we gathered strength and created a basis to push the issue harder and in a more effective way during the spring to make it possible to create a proper change and improvement for the Campus bus!

Visit from the Minister of Education Anna Ekström

In April, Sweden's Minister of Education visited Linköping University and some of us students had the honor of speaking to Anna in private during her visit. We took the opportunity to tell Anna about our experience during the exam period in January. This was when Anna and the government issued recommendations to have more exam opportunities at the higher education institutions, which, however, was judged by the higher education institutions to be extremely costly and difficult to implement, which created difficulty for us students. During this period, many students were worried about how the pandemic affected their chances of being approved to continue their studies through exams and we reasoned with Anna about how one could do differently if a similar situation arose again. In addition to this, we raised the cost connected to Practical education, the issue we are pursuing on several fronts this spring. Anna listened very carefully to what we had to say and will carry this with her into future discussions. She also asked us for information on the issue, which we are now compiling for our future advocacy work around the practical education question.

Vrinnevi hospital part in Campus Norrköpings development plan

At Campus US, the hospital is a natural part of the campus and the closeness and interactiveness between them make for a big

HEAD OF STUDENT WELFARE AND SUPPORT

FOCUS: RECEPTION

Isabelle Arnberg

sam@consensus.liu.se

073-940 55 21

HEAD OF STUDENT WELFARE AND SUPPORT

FOCUS: WORKING ENVIRONMENT

Jolanda Saxfors

sac@consensus.liu.se

073-981 50 25

HEAD OF MEMBER- AND STUDENT REPRESENTATIVES

Rima Patel

Theme; The city is growing

In April we also got the opportunity to meet Muharrem Demirok, the chairman of the community building committee in Linköping and Thomas Lilja, CEO of Studentbostäder, and had a theme meeting called The city is growing. Here Muharrem and Thomas got to present their thoughts and visions about Linköping for the coming years where we students got to make important contributions about our experience of the various aspects. We also talked a lot about security issues and we can work together in the future when it comes to security in our residential areas. In addition to this, we also talked a lot about moving chains and how the construction of small villas in Linköping will lead to the liberation of small and cheap apartments for students. Thomas also presented planned constructions and renovations of student housing in the future and gratifyingly, there are several new projects near Campus US. Now it is important to think smart and work with influence at the national level in order to keep rents down as much as possible in times where both materials and other resources are rapidly increasing in price.

part of the campus feel. The same can not be said about Campus Norrköping and Vrinnevi hospital, something that mostly depends on the geographical distance between them. Today, we have two educational programs at the Medical faculty that are fully placed in Norrköping with a large group of regionalized medical students that are daily affected by these geographical limits. To make it possible for good communication and integration between both parts of the campus, it is time that LiU starts to look at Campus Norrköping and Vrinnevi hospital as one unit. During the spring the real estate department at LiU started to work on a development plan for Campus Norrköping where they have excluded Vrinnevi hospital since it does not physically belong to the "campus area". The development plans include, often, both resource and financial means and therefore we place ourselves critical to the view of Campus Norrköping and Vrinnevi as two separate units in the development work. We are now pushing the issue on several fronts to get the real estate department to rethink the separation of Vrinnevi and Campus Norrköping to make sure investments and resources also will be directed to Vrinnevi hospital study locals in the development plan.

Evaluation of education between regionalised cities.

Since returning to Campus, medical students in the clinical term have expressed dissatisfaction with the new lecture format. Even before the spring term, there were signs of concern from students in the program who felt uncertain about how the teaching will be conducted in the future. Together with the Medicinska Föreningen, we have criticized the spring's handling of teaching since the return, but have now had an overall dialogue with the medical programme's management about the possibility of re-evaluating the IKT system before a decision on closure is made.

Meeting with Kristina Edlund

Kristina Edlund is a municipal commissioner at the Municipality of Linköping and group leader for the Social Democratic party, which makes her the leader of the opposition in Linköping municipal politics. We were invited during April to lunch with Kristina Edlund, where we were able to decide the agenda. We discussed the student's health both before and after the pandemic and what we observe to be trending regarding health, stress and loneliness for students. We also raised important questions regarding difficulties for a lot of the programs with VFU-placings in both municipal, regional and private sectors, and how this affects students, the security in our student areas and the municipality of Linköpings view of students as future permanent citizens. Kristina has a background as a nurse and did a study visit to the nursing program after lunch, which we look positively at. Hopefully, Kristina will be thinking about the important student issues in the coming election campaign.

Together, we are now compiling a survey to evaluate experiences of this term's approach and the goal is to compare this fall with lecturers on site. If you have questions or comments about IKT teaching, please contact uu@consensus.liu.se.