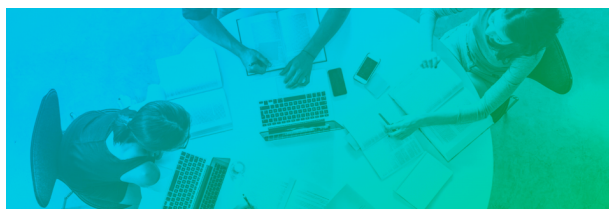


Impact of the Month

December

2022-12-21



Consensus
MEDICINSKA FAKULTETENS
STUDENTKÅR

And that's a wrap!

Fall semester has flown by in fast pace and this is the last Impact of the Month for this year. Consensus office will be closed between 22 of December and 23 of January. You are welcome to get in touch with us through email if needed.

We hope that you're happy with your work this semester and can take a little time off over christmas.

Do you have anything you wish Consensus to work with, or a question that you think Consensus should bring more attention to? Please let us know by contacting us, you can find our information to the right!

Impact of the month is Consensus way to give you a bigger insight in our impact work. If you want to read more Impact of the month you can find them at:

<https://www.consensus.liu.se/aktuellt/manadens-paverkan>

Bli kårmedlem!

medlem.consensus.liu.se



Become a member here:
medlem.consensus.liu.se

Student management council

Early in December Consensus participated in the Student management council together with our sister unions. The Student management council is a forum where representatives from the student unions meet with the Linköping University management to discuss a selection of areas that the unions would like the university to work with during the coming months. The areas that the unions chose to focus on this student management council was towards development of EvaliUate, student participation when election programme director and lastly degree certificate. During the student management council it was discussed in which forums should be responsible for the different areas, and the unions will receive feedback at the next student management council in May.

Full day with the boards

Consensus participates in many different meeting forums, amongst others the Faculty Board and the Medical Faculty Educational Board. Recently Consensus representatives participated in full-days with the two different boards. In these forums strategic matters regarding LiU and in particular the Medical Faculty are discussed.

At the Faculty Board Consensus brought up student representatives to discussion. Because of this, the faculty will work together with Consensus regarding the marketing and recruitment of student representatives to forums such as program council.

Contact us:

PRESIDENT OF THE BOARD

Lydia Toft

ko@consensus.liu.se

0733-44 98 30

VICE-PRESIDENT OF THE BOARD

Clara Karlsson Brefält

vko@consensus.liu.se

073-962 55 52

HEAD OF EDUCATIONAL AFFAIRS

Alva Amrén

uu@consensus.liu.se

073-940 55 20

HEAD OF STUDENT WELFARE AND SUPPORT:

FOCUS RECEPTION

Mikaela Alexanderson

sam@consensus.liu.se

073-940 55 21

HEAD OF STUDENT WELFARE AND SUPPORT:

FOCUS WORKING ENVIRONMENT

Sofia Luong

sac@consensus.liu.se

073-981 50 25

MEMBER- AND STUDENT

REPRESENTATIVE OFFICER

Lisa Harrysson

msa@consensus.liu.se

073-940 55 52

Update nursing programme

During the fall Consensus has worked closely together with the program directors as well as the two sections with improving the ongoing situation at the programme. The work has been focused mainly towards the two exams ME12 and MOI3. The work will continue during next term.

Launch of Student intranet

On the 12th of December the new Student intranet was launched. The Student Intranet has been in the works for quite some time and the student unions have been involved in the process. At the Student intranet you will find lots of useful information, such as your rights as a student. Super important, in Consensus opinion!

Mentorship

A couple of years ago MedFak had a concept called the Mentorship programme. Older-term students acted as mentors to the new students in their studies. A while back the Mentorship programme was canceled and its absence has been noticeable and requested. Therefore, Consensus will work together with the Student Unit during the spring to look over the possibilities to reinforce the Mentorship at MedFak, to what extent and how it will be formed is yet to be decided!

Locker-rooms at US

During November and December students have experienced issues with the locker rooms at the clinical placements at the hospital. Because of this Consensus have actively worked on solving the problem so students can access the locker rooms. Consensus have had close contact with the region to solve the issue. No solution has been presented and we will continue the dialogue next year.

Plan for the spring

It might feel far away, but when the spring term starts Consensus have many exciting projects coming. Other than the ongoing projects and the follow up on those, Consensus will for example start a project regarding interprofessional learning (IPL) and another project regarding highlighting the rights for students regarding non-completion of courses.

PLEASE HELP US

Evaluate Impact of the Month by answering this short survey:

<https://forms.gle/qikAMteAoUFd1C2P8>